

BELLATERRA HOME

Model: 202016A-BRIDGE

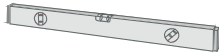
Tools List (Not included)



Tape Measure

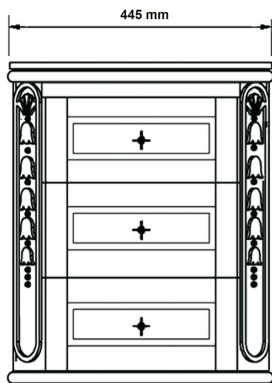


Silicone



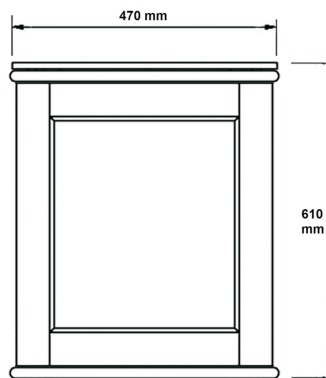
Spirit Level

Please refer to the width of this bridge unit as below.



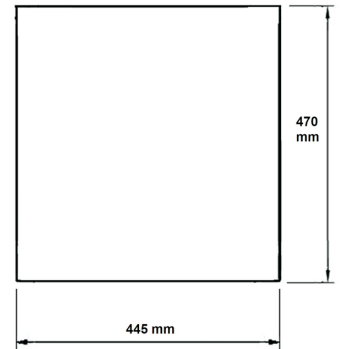
Step 1

Please refer to the depth and height of this bridge unit as below.



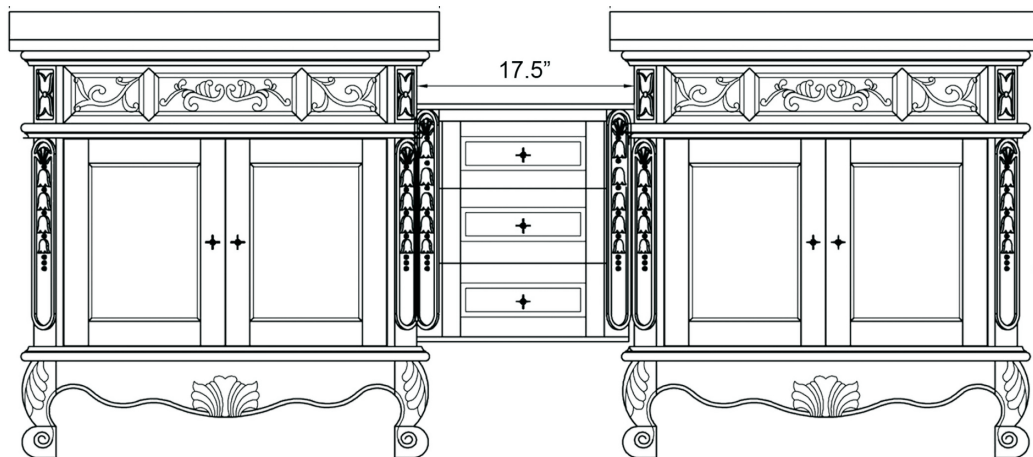
Step 2

Please refer to the measurement of the counter top as below.



Step 3

Please put this bridge right on the overhang portion at the bottom of the sides of the main vanity, refer to the images below showing how to install this bridge.



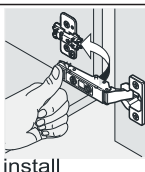
Step 4

CARE AND CLEANING

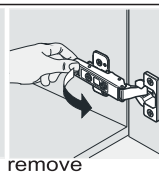
For best results in caring for your stone top, we suggest:

- Always wipe off spills immediately.
- Seal the stone top regularly with a good quality stone sealant.
- Never use strong or abrasive cleaner, and always test your cleaning solution on unnoticeable areas before applying to the entire surface.
- Wipe surface clean, immediately after applying cleaner.
- Do not allow cleaner to sit or soak. Never let cleaner sit on the surface of the stone for long periods of time.
- Use a soft, dampened sponge and cloth. Never use an abrasive material such as brush or scouring pad to clean surface. They will scratch the surface of the stone top and lavatory
- Always rinse and wipe clean the fixtures to prevent soap buildup.

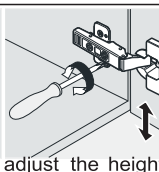
INSTALLATION TIPS:



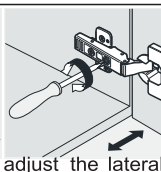
install



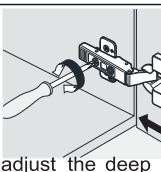
remove



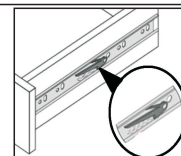
adjust the height



adjust the lateral



adjust the deep



press down the pin on this side & press up the one on another side to pull out the drawer box.

NOTE: SINK STYLE, SHAPE, FAUCET HOLES, CUTOUT ON TOP, VANITY MAY VARY FROM THE PICTURE ABOVE. INSTRUCTIONAL PURPOSE ONLY.

Professional installation is recommended.
www.bellaterra-home.com

Bellaterra Home LLC, All Rights Reserved 2015